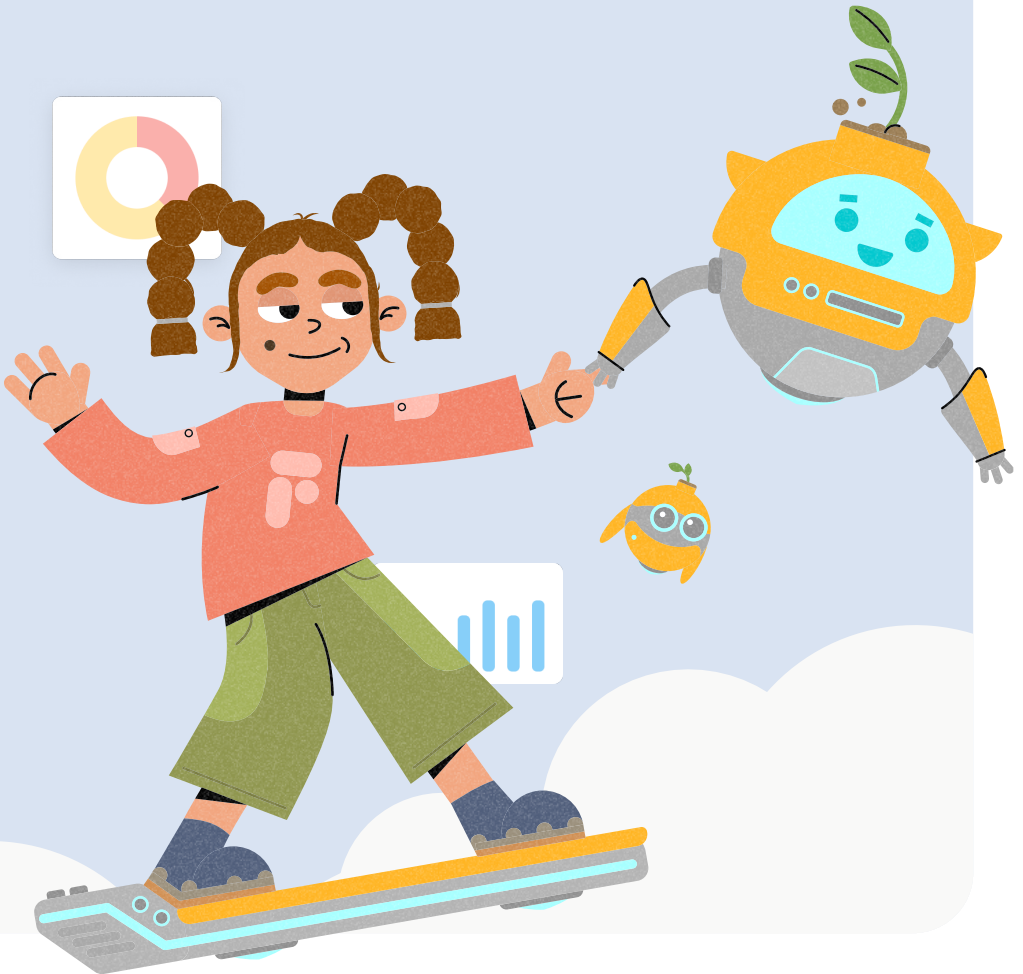




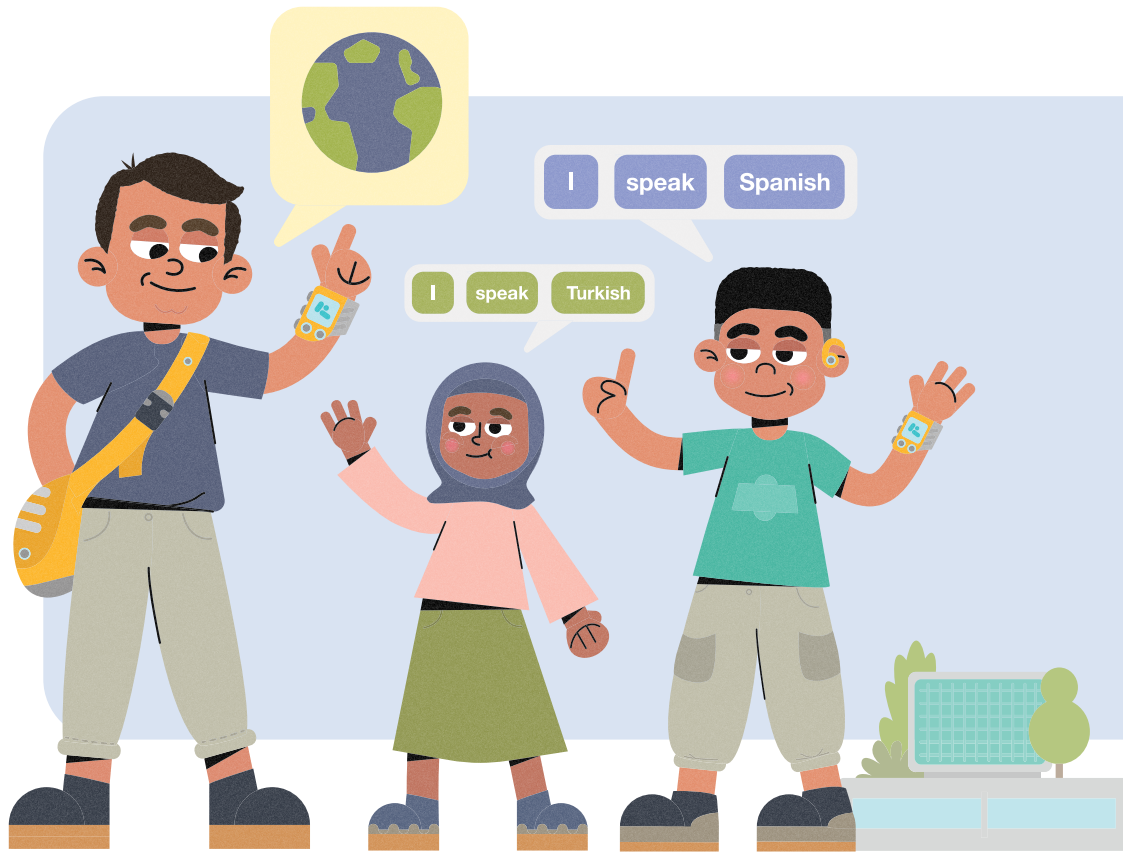
Your digital partner in EAL and ESOL teaching and assessment



Who we are

At **FlashAcademy**®, we are passionate about breaking down language barriers and empowering learners to thrive. Our journey has grown into a mission to support schools, colleges, employers and learners through innovative tools designed to transform English language learning.

Over 2400 schools, colleges and local authorities and 700,000 learners worldwide have accelerated English language acquisition with **FlashAcademy**®. We are proud to be the UK's number one EAL platform.



Our mission is simple:

Inclusion

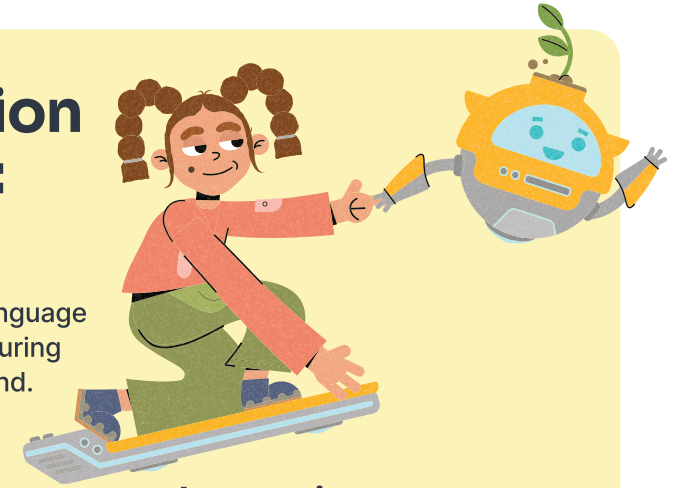
To celebrate every language and culture while ensuring no learner is left behind.

Empowerment

To equip teachers with tools to make a lasting impact.

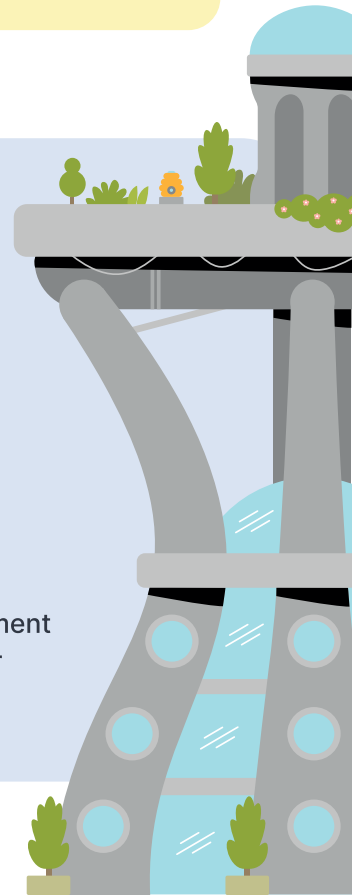
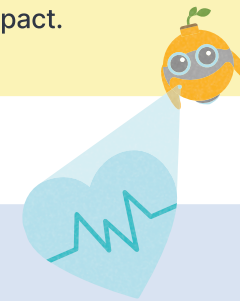
Innovation

To combine education and technology to create practical, engaging solutions.



At the heart of **FlashAcademy**® is a team of passionate experts, who bring a unique blend of professional expertise and personal commitment to every educator and learner we work with. Our CEO, Veejay Lingiah, who faced his own challenges growing up as an EAL student, drives our shared belief that language should be a bridge, not a barrier.

FlashAcademy® is more than a platform, it's a commitment to creating a world where every learner, no matter their starting point, has the opportunity to succeed.



Who is FlashAcademy® for?



Primary schools

Our experts have created over 450 lessons on phonics, handwriting and high-frequency words for primary students.

Secondary schools

We offer over 400 lessons covering grammar, punctuation, advanced vocabulary, reading comprehension and idioms for secondary students.



Workplaces

Transform workplace communication, safety and productivity by enhancing English language acquisition for all employees.

Local authorities

Accelerate English language acquisition for new arrivals by supporting integration and building confidence.

International schools

High-quality, personalised language education with lesson content aligned to the British curriculum.

Multi-academy trusts

Tailored solutions to help multi-academy trusts deliver scalable, consistent and cohesive EAL learning and assessment across schools.

FE colleges

Reduce staff workload and make enrolment easier with Leap - our ESOL digital learning platform and assessment tool.



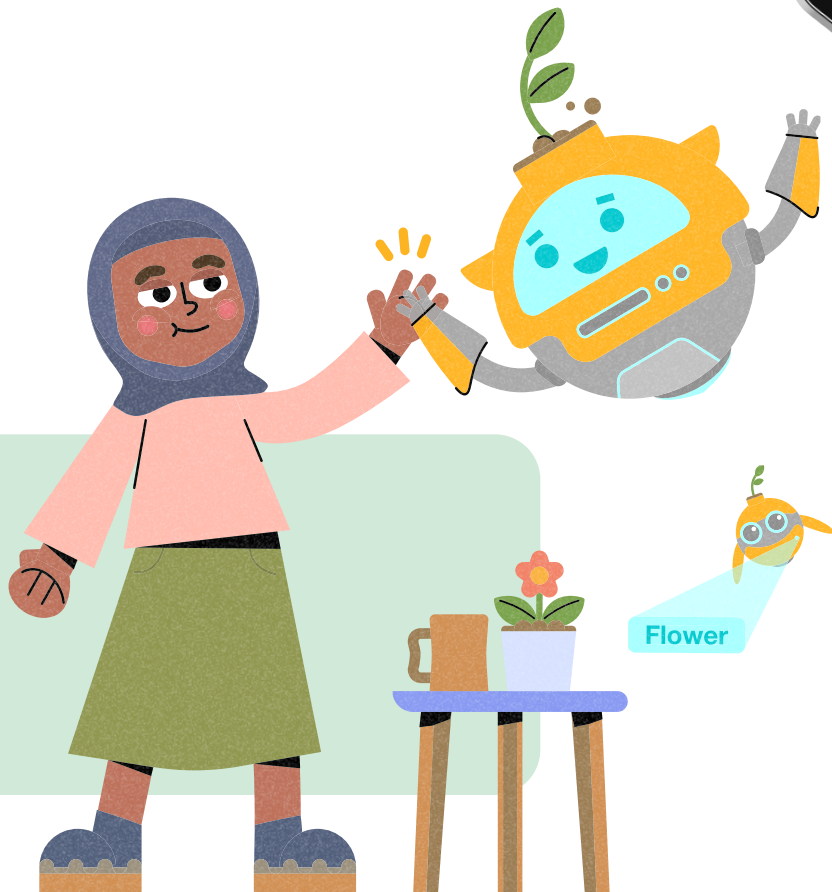
Ready to transform your EAL and ESOL teaching?

Talk to us about starting your free trial.



Unlock the potential of EAL learners held back by a language barrier

FlashAcademy® is a learning app and assessment tool that has supported over 700,000 learners.



Why are schools turning to FlashAcademy®?



Inclusive

48+ home languages to include and engage every pupil.

Innovative

Leveraging the latest technological advancements, such as AI, to make assessments more efficient, accurate and save teachers time.

Pedagogical

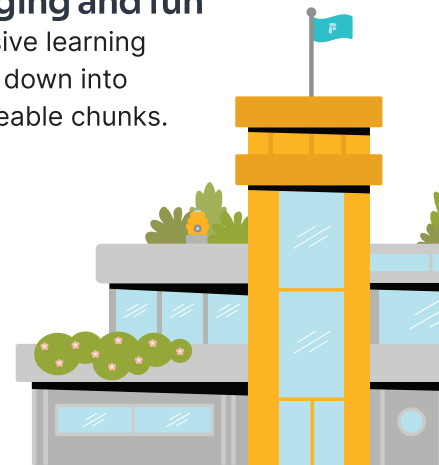
Grounded in practical vocabulary and skills, aligned to the Department for Education's curriculum.

Engaging and fun

Immersive learning broken down into manageable chunks.

Informative

Monitor and evidence the progress of EAL learners and share data with stakeholders, leadership and parents.



Meet Leap

Your new partner in ESOL assessment

A digital assessment tool designed to streamline enrolment and onboarding.

Enrolment

- Identify student strengths and weaknesses
- Customised and adaptive assessments powered by machine learning
- Assess receptive and productive skills

Average proficiency grade

E1

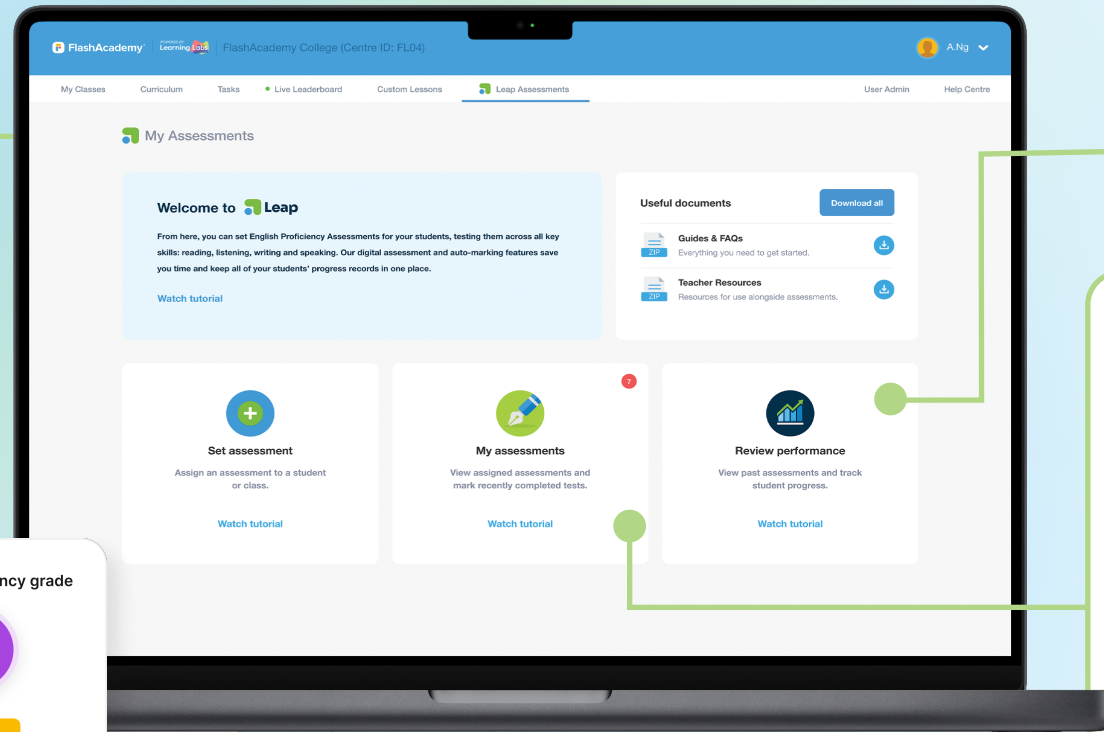
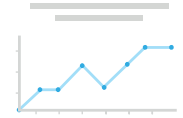
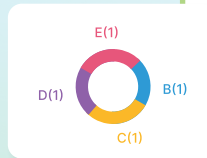
Edit

Placement

- Grade students' overall proficiency level and breakdown by skill
- 1,200+ questions designed specifically for FE and post-16 learners
- Aligned with the Department for Education's Adult ESOL Core Curriculum

Track progress

- Store student progress records in one place
- Track and measure proficiency of individual students, classes or groups
- Show evidence of impact through ongoing student and class improvement



Marking

- Save time with auto-marked receptive skills and paper-free assessments
- Option for tutors to overwrite automarked grading
- Accurate grading and level descriptors with suggestions for continued learning

Onboarding support
with your dedicated
customer success team



Join the
next intake





Comprehensive, inclusive and accessible CPD training for EAL teaching – designed for all educators.

At FlashAcademy®, we believe in a whole-school approach to EAL teaching, where every educator plays a part in the success of multilingual learners. Grow with FlashAcademy® is a CPD programme that equips your entire staff with the knowledge and strategies to support EAL students effectively.

Learn and apply new techniques, reflect and continuously refine your school's approach to EAL.

The programme has been created by experienced teachers and EAL specialists who truly understand the challenges of teaching multilingual learners. With actionable, real-life context learning, we'll help you deliver impactful and supportive teaching to enable your EAL students to thrive.

Teachers told us they need actionable strategies, as well as theory, to make an immediate impact in their classrooms. Our CPD programme equips teachers with:

- Real-world, evidence-based methods to build confidence and improve EAL outcomes.
- Flexible, on-demand learning that fits into teaching schedules.
- Collaborative expert support to help navigate challenges and support development.

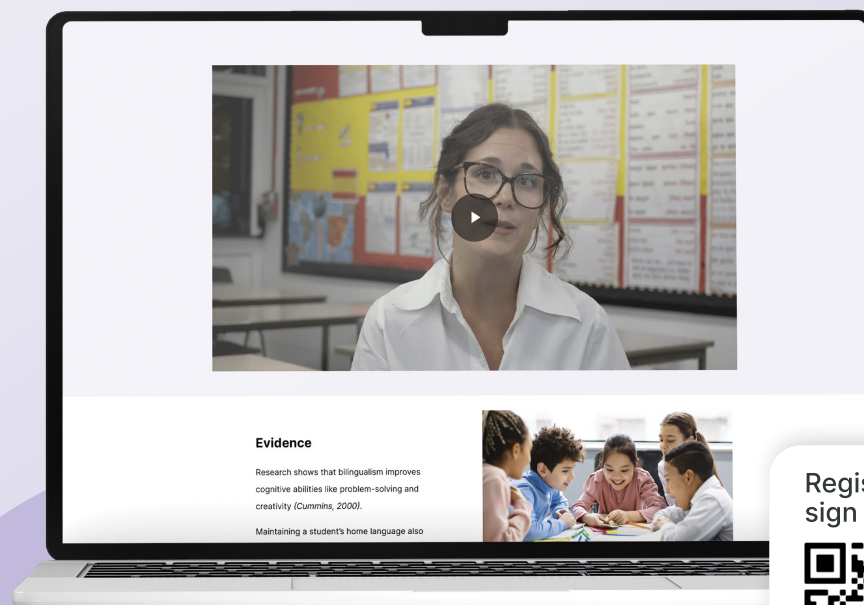
From understanding multilingual learners to implementing inclusive strategies, Grow with FlashAcademy® equips you to lead meaningful change in your classroom and across your school. It's more than a training course, this is a resource built on our commitment to unlocking the potential of all EAL students.

Why educators should choose Grow?

As all educators take on increasing responsibility for EAL students, the demand for high-quality, accessible CPD is greater than ever. Grow with FlashAcademy® bridges this gap, empowering the creation of inclusive, impactful classrooms.

What's included?

- Video lessons, interactive content and reflection tools for actionable learning.
- Virtual expert sessions for personalised advice and support.
- Modules covering foundational to advanced strategies, with over 18 hours of CPD.







Register to sign up



AI-assisted marking

Save time grading EAL assessments with **AI-powered** insights

-  **Mark all four skills quickly:**
Our AI-reviewer grades reading, writing, listening and speaking
-  Spot patterns of learning proficiency at **pupil, class and school level**
-  **In-depth analysis** to help you understand our AI-reviewer's grade justification
-  Teachers have **ultimate control** and can override grades at any point

Coming soon

